



# Cultrex™ Extracellular Matrices for 2-D and 3-D Cell Culture Applications

Products include a full range of [basement membrane extracts](#) (BME) and purified [extracellular matrix](#) (ECM) proteins, including Laminin I, Collagen I, Collagen IV, and Vitronectin. Select Cultrex BME and ECM products undergo additional qualification for use in 3-D cultures, stem cell cultures, and cell invasion assays.

## Cultrex: Your Extracellular Matrix Solution.

Extracellular matrices (ECM) play an important role in establishing accurate tissue organization to recapitulate in vivo environments. Because of this, it is important to select a matrix that is consistently expressed from lot-to-lot for better and more reproducible 2-D and 3D in vitro cellular models.

Our most advanced extracellular matrix, [Cultrex UltiMatrix RGF BME](#), is specially formulated with higher extracellular protein content, consistency, and clarity for optimal organoid, spheroid, and pluripotent stem cell culture.



**Cultrex Basement Membrane Extracts** (BME) are a mixture of specialized protein extract purified from the Engelbreth-Holm-Swarm (EHS) murine tumor. These extracts provide a natural extracellular matrix hydrogel that polymerizes at 37 °C to form a reconstituted basement membrane that is used to promote and maintain a differentiated phenotype of cell cultures such as epithelial cells, endothelial cells, glandular cells, neurons, and smooth muscle cells. BME can also be utilized in cell attachment, neurite outgrowth, angiogenesis, in vitro cell invasion, and in vivo tumorigenicity assays.

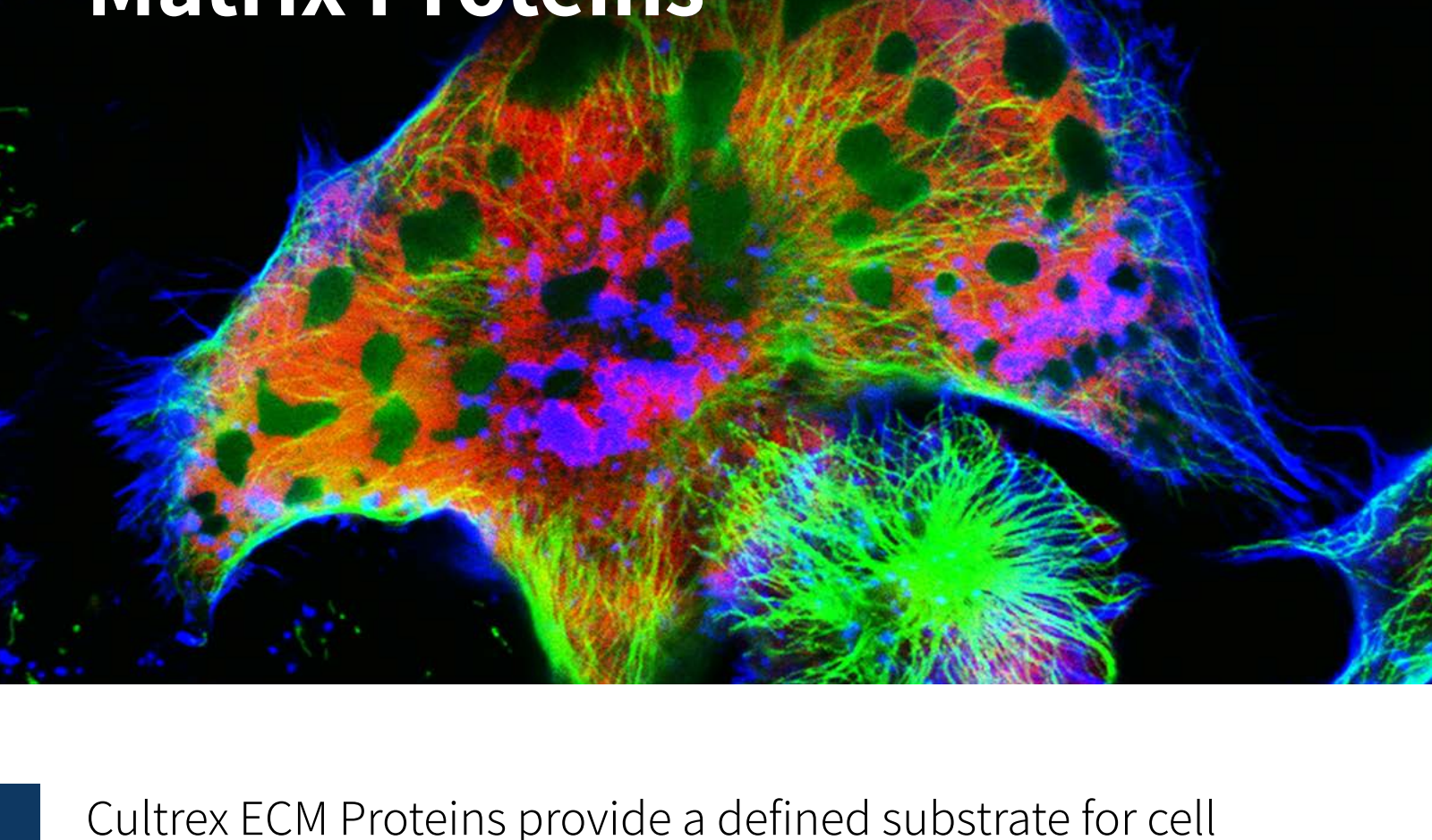
### Our Products advantages:

- **Rapid** - gels within 30 minutes at 37 °C.
- **Reliable** - maintains gelled form in culture medium for 14 days.
- **Sterile** - screened for bacteria, fungi, and mycoplasma.
- **Specific** - available with reduced growth factor content, with or without Phenol Red.

## How to select your best option- Cultrex BME Matrix Selection Guide:

Application	Product	With/Without Phenol Red
Stem Cell, Organoid, 3-D Culture	Cultrex UltiMatrix	BME001-05 (RGF)
General Cell Culture	Cultrex Basement Membrane Extract, Type 1	3432-010-01 3433-010-01 (RGF)
Organoid	Cultrex Basement Membrane Extract, Type 2	3532-010-02 3533-010-02 (RGF), 3536-005-02 (RGF, Select)
Difficult to Culture Organoids	Cultrex Basement Membrane Extract, Type R1	3433-010-R1
Xenograft, Tumorgraft	Cultrex Basement Membrane Extract, Type 3	3632-010-02
Stem Cell	Cultrex Stem Cell Qualified Basement Membrane Extract	3434-010-02 (RGF) 3434-050-RTU (RGF, Ready BME)
3-D Culture	Cultrex 3-D Culture Matrix	3445-010-01 (RGF)

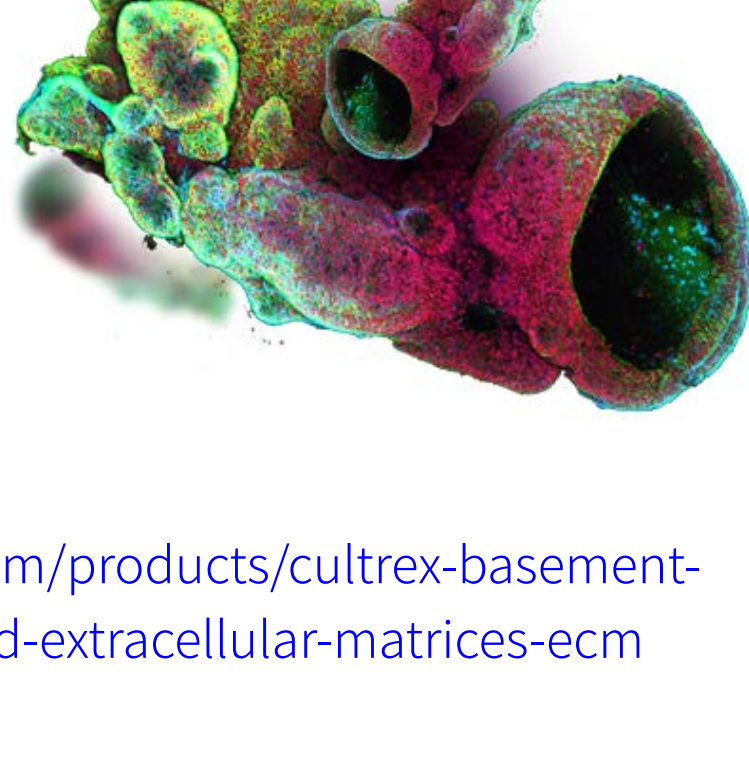
## Cultrex Extracellular Matrix Proteins



Cultrex ECM Proteins provide a defined substrate for cell adhesion in culture. Many proteins of the ECM interact with cells via cell surface integrin family receptors.

The resulting focal contacts are important for the maintenance of tissue architecture and for supporting a variety of cellular processes. ECM molecule/integrin binding may initiate a complex network of signal transduction cascades that, depending on the context, play an important role in cell spreading, migration, proliferation, and differentiation during embryogenesis, wound healing, and tumor development. To accommodate a variety of different models, we have developed a full range of ECM component proteins including Laminin I, Collagen I, Collagen IV, Fibronectin, and Vitronectin.

These include purified proteins that have been qualified for 3-D or stem cell cultures.



<https://www.rndsystems.com/products/cultrex-basement-membrane-extract-bme-and-extracellular-matrices-ecm>

# SUMMER SALE

**Buy 20ml Cultrex™ +2** of our products

And get **20% off** for all package

**Buy 20ml Cultrex™ +3** of our products

And get **25% off** for all package

**Buy 20ml Cultrex™ +4** of our products

And get **30% off** for all package